

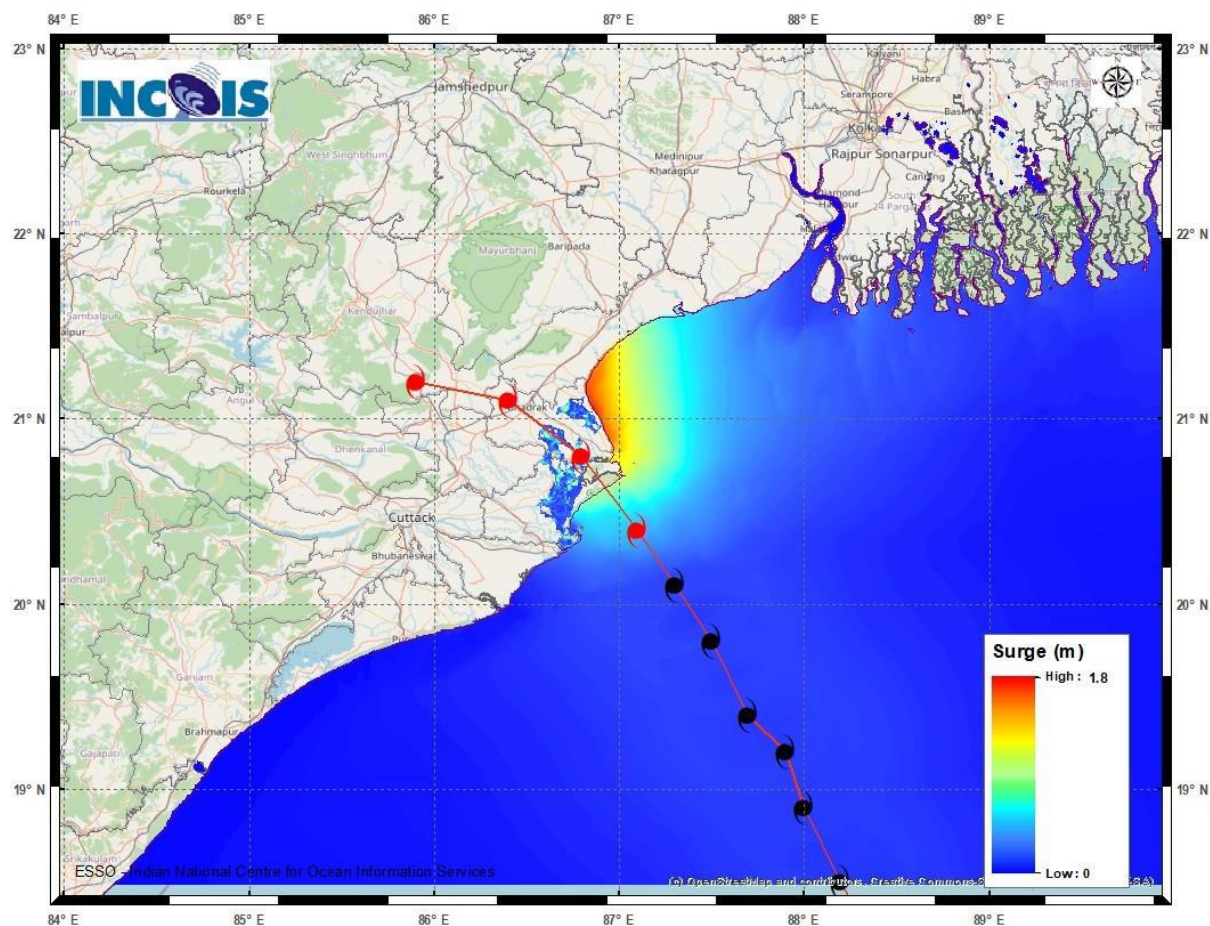
## STORM SURGE GUIDANCE BASED ON 0300 UTC OF 25th October, 2024

### Storm surge warning:

Storm surge of upto 1.0 m height above astronomical tide is very likely to inundate low lying areas of Bhadrak & Balasore districts of Odisha and East Medinipur districts of West Bengal during next 3 hours.

Storm surge of upto 0.5 m height above astronomical tide is very likely to inundate low lying areas of South 24-Parganas district of West Bengal during next 3 hours.

### Storm Surge Warning Graphics based on Forecast Track



DISTRICT	STATE/UNION TERRITORY	NEAREST PLACE OF HABITATION	STORM SURGE (m)*	EXPECTED INUNDATION EXTENT (km)
Bhadrak	Odisha	Mohanpur	1.3-1.8	Upto 1.15
Baleswar	Odisha	Kumbhigari	0.4-1.6	Upto 1.08
Kendrapara	Odisha	Tikayat Nagar	0.2-1.3	Upto 3.01
Jagatsinghapur	Odisha	Musadia	0.2-0.5	Upto 2.91
Purba Medinipur	West Bengal	Dakshin Purushottampur	0.3-0.5	Upto 0.98